



(Opposite) Emphatic geometry, hidden calculus, and plenty of open space are trademarks of Olle Lundberg design. (Right) A protective enclosure ensures that Mary Breuer's garden is heavy with tomatoes, salad greens, vegetables, and flowers.



SONOMA COUNTRY CABIN

OWNERS: Mary Breuer and T. Olle Lundberg
ARCHITECT: T. Olle Lundberg, AIA, Lundberg Design
PHOTOGRAPHER: Jon D. Peterson

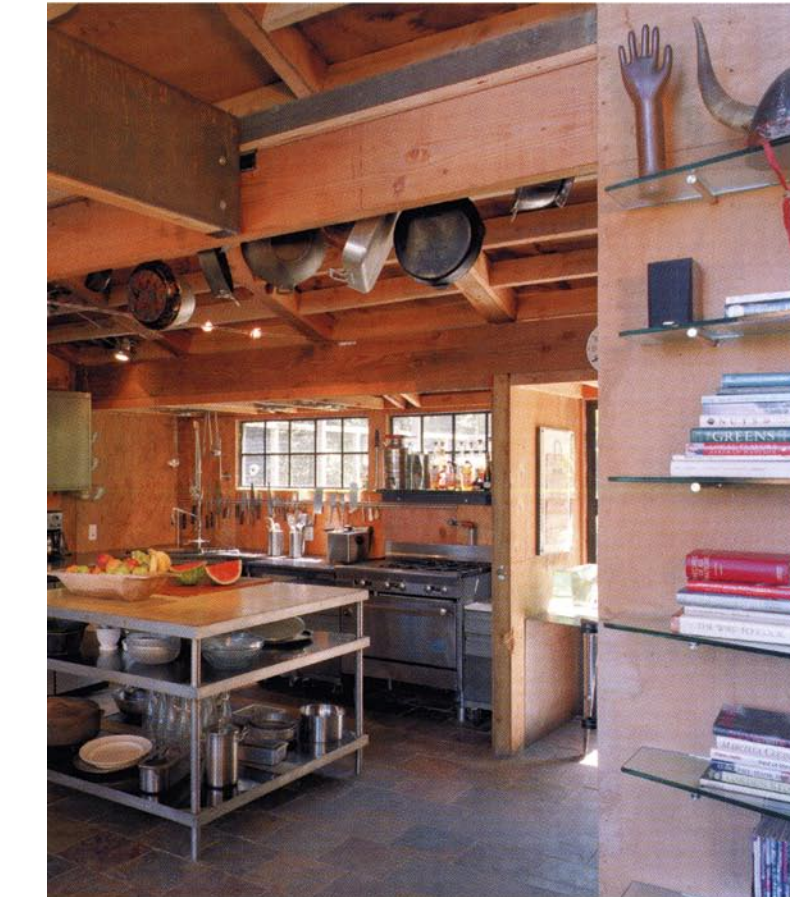
A Sonoma County hillside is the perfect location for a few days away from the office in San Francisco. Architect Olle Lundberg never fails to mix the unanticipated, the beautiful, and the refreshing into his designs. Olle and Mary's cabin is on sixteen acres of redwood forest facing northeast over a pristine river canyon. The site and the cabin design are all about the view and the house opens up toward it. The deck projects itself and its guests out into the air, and the pool is the magic touch, allowing bathers the ultimate luxury of swimming twenty feet in the air—literally “in the treetops.”

The main level of the cabin is 900 square feet with a 150-square-foot bedroom loft overlooking the living room and the distant valley. A large 1,500-square-foot deck runs from back to front along one side of the cabin, enclosing a spa and the twenty-five-foot-diameter swimming pool. This extraordinary feature—typical of Lundberg's playfulness—is a reclaimed redwood water tank that is fourteen feet deep. The tank is built into the hillside and is structurally supportive of the deck and cabin.

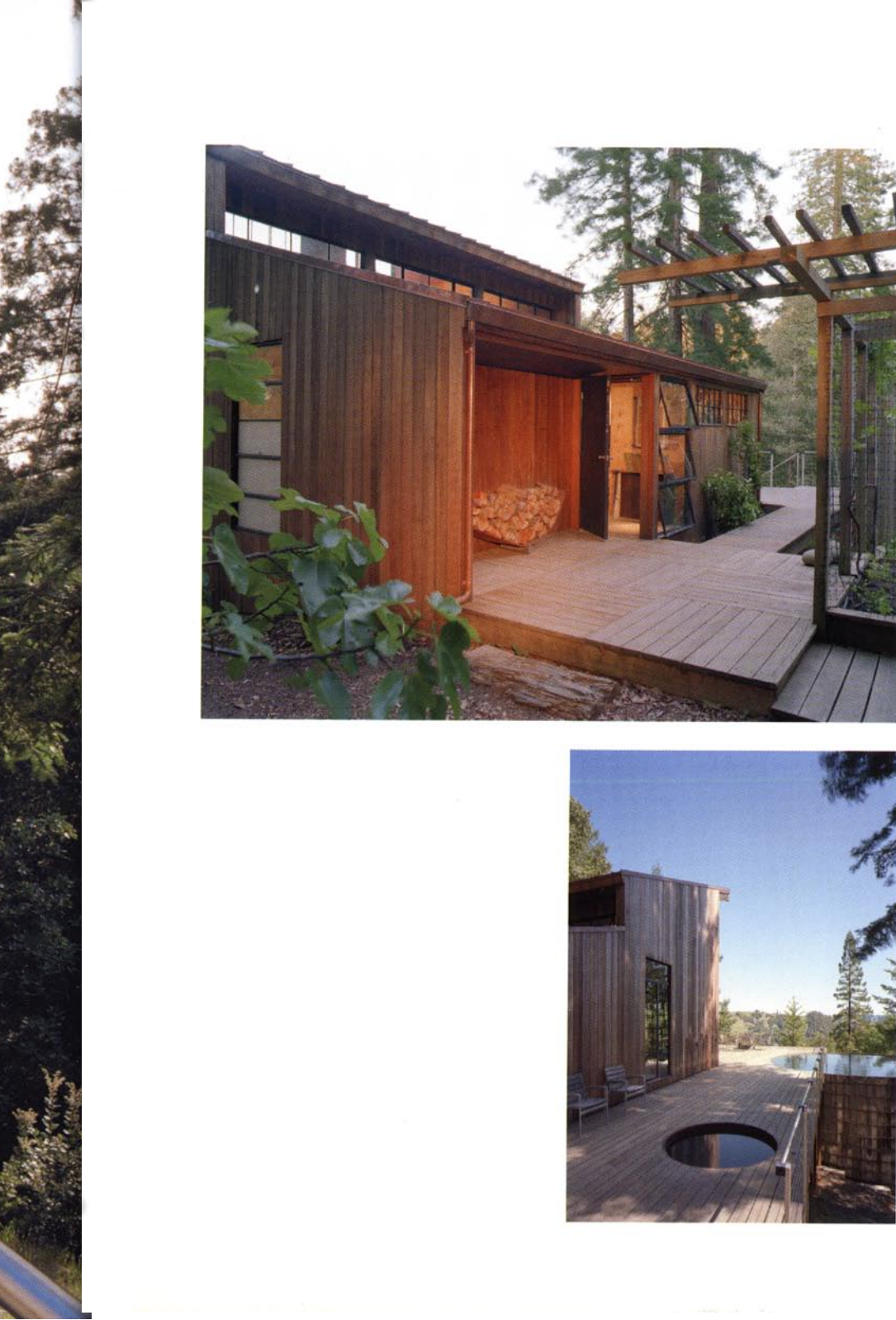
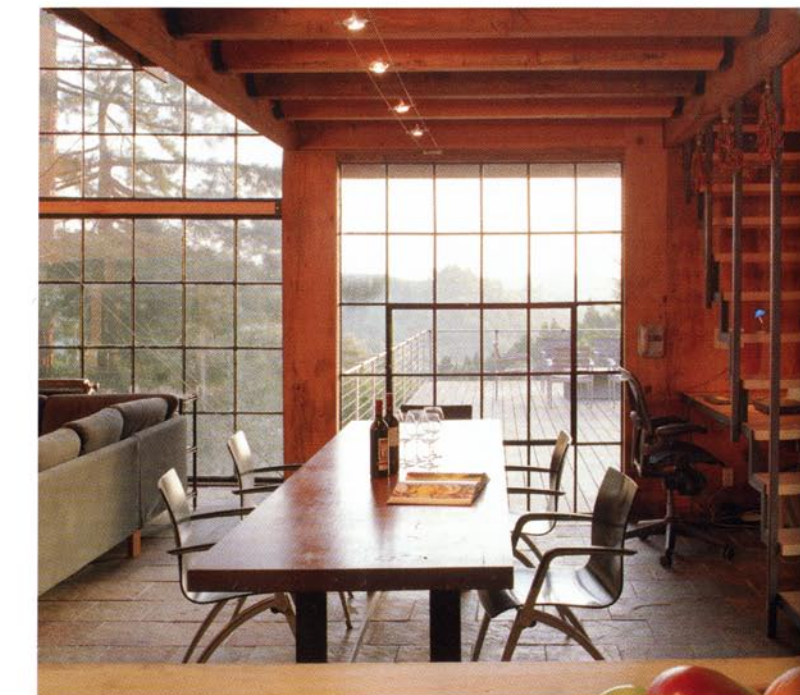
The exterior siding is redwood, the roof is standing seam copper, and all of the windows are reclaimed from remodeled buildings. The

main floor is Chinese slate and the bedroom floor is maple. The kitchen cabinets are steel file cabinets on coasters for easy cleaning and mouse-proofing. The kitchen island, the dining table, which is made from a single slab of redwood, and the circular-steel firewood holder were designed and fabricated by Olle's firm, Lundberg Design.

Behind the cabin is a fenced vegetable garden occupying three thousand square feet. Mary tends the garden, which produces lush vegetables and “glorious” tomatoes each year. Just to get to the garden every weekend is Mary and Olle's “weekly dose of sanity.”



(Upper left) A broad sweep of Chinese slate tiles are used throughout the main cabin level. The brushed stainless steel kitchen island and appliances have a utilitarian—and festive—look. (Lower right) The dining table is steps from the kitchen, tucked under the sleeping loft. Outside, the deck extends into the treetops. (Opposite) Attractive glass panels create the illusion that the living room is floating in the trees. The absence of a deck accentuates the drop-off from the bottom of the window. The wood-storage “wheel” was designed by T. Olle Lundberg.



(Opposite) An irresistible plunge: the swimming pool made from a reclaimed redwood water-tower tank. The depth is fourteen feet; its diameter is twenty-five feet. The tank is anchored into the side of the slope and offers structural support to the fifteen-hundred-square-foot deck. (Upper left) Walkways connect the entry, side and front decks, and garden. The plane of the shed roof is altered by a clerestory. (Upper right) Entry details: The wood-storage receptacle and outdoor sconce were designed by T. Olle Lundberg. (Lower left) The length of the deck including spa and pool.